



Trawler fishing boat 27m

General

Yard no.
Delivery date
Basic functions
Classification Egypt shipping inspection (ESI)

Auxiliary equipment

Generator sets : CAT 3304
Capacity : KW:65

Dimensions

Length o.a. 27.10 m
Beam o.a. 7.00 m
Draught aft 3.85 m
Material Steel

Deck lay-out

3 x 14.5 ts split winches
4 x 12.5 ts split net drums
1 x 1 ts TMP deck crane
1 x 1.5 ts TMP 900 deck crane

Performances (trials)

Speed :10.00 knots

Accommodation

6 persons

Propulsion System

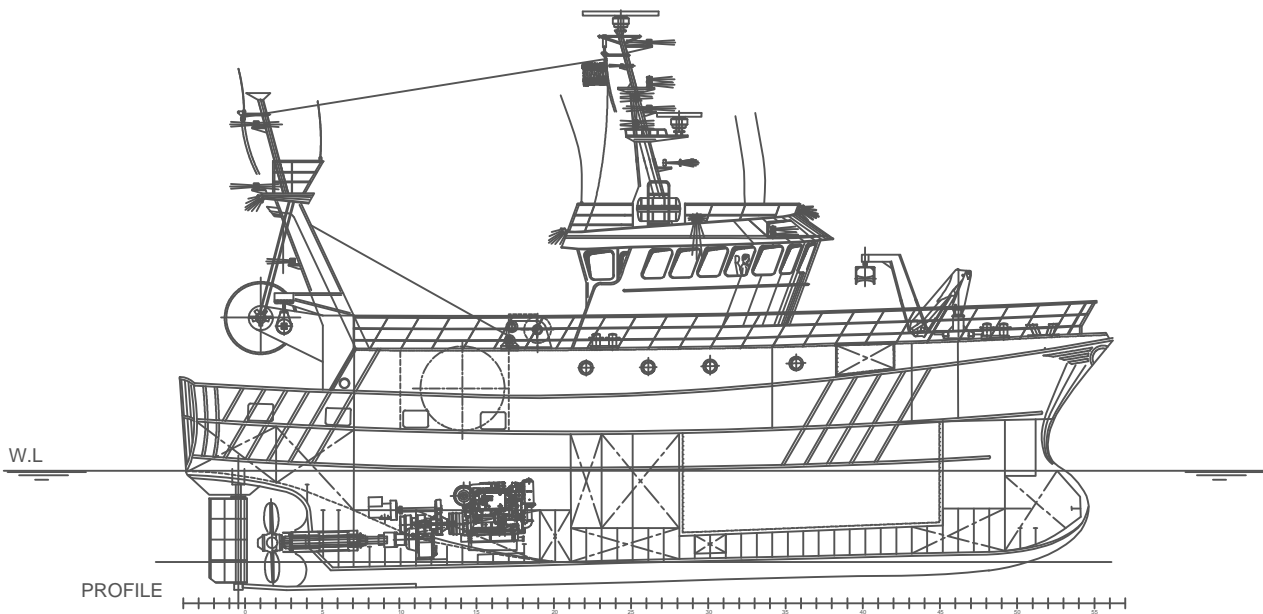
Main engines Caterpillar, 3508B
Total power 775 BHP
Gearboxes 6.0:1 twin disk

Nautical and communication equipment

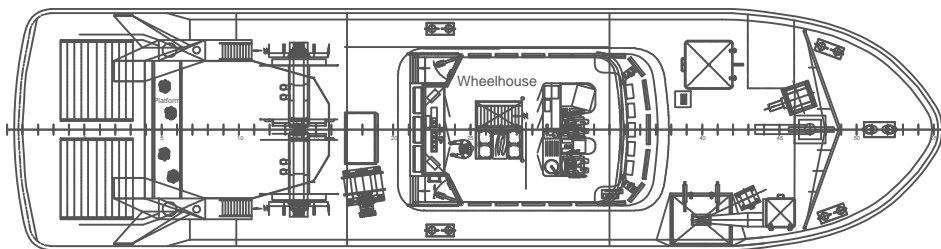
Radar : Furuno
GPs : Furuno
Echosounder :Furuno
Navtex : Furuno
VHF radio :2x Sailor
SSB radio telephone :Furuno
DEPTH FINDER : Raytheon colorscope V850

Propulsion System

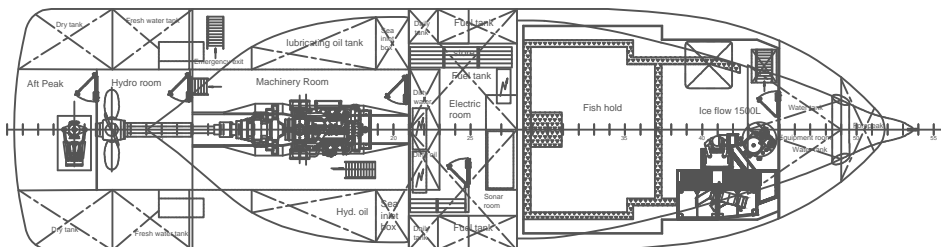
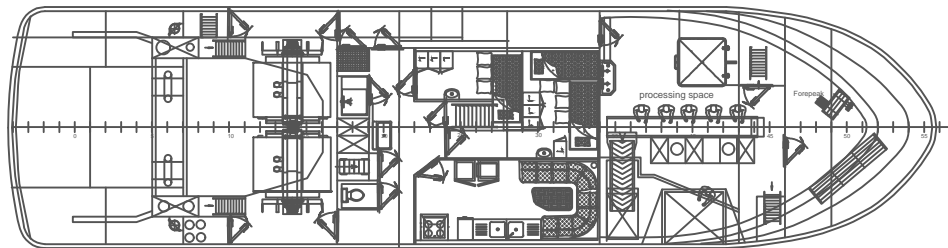
Main engines Caterpillar, 3508B
Total power 775 BHP
Gearboxes 6.0:1 twin disk



PROFILE



MAIN DECK



PRINCIPAL DIMENSIONS

LENGTH O.A (HULL) 27.10 m
 BEAM MLD 7.00 m
 DESIGN DRAFT 3.85 m



Jacobs Spijker dreef 196
 2132 FZ Hoofddorp
 The Netherlands
 Tel. +31(0)23-5547310

27.10-TRAWLER

Title : **GENERAL-ARRANGEMENT** PROJ.No: **AAM201409**

Scale: **1:140** Drawn: **Yusuf Meryem** Size: **A 1** Date: **9-9-2014** Dwg.No: **AAM201409-000**

This drawing is protected by copyright and property of the designers, no part whatsoever may be copied, reproduced, modified or used in any manner without permission.