

## Non Propelled Barge 70 m

### General

Yard no.	
Delivery date	
Basic functions	Carriage of non-dangerous cargo, container and bulk
Classification	BV 15 IN(06) Z, Cargo vessel, Double hull, No-propulsion, IR, Grabloading, Equipped for transport of containers, Intact stability

### Dimensions

Length o.a.	70.00 m
Beam o.a.	11.40 m
Depth at sides	3.00 m
Draught	2.38 m
Displacement	1790 t

### Tank capacities

Waterballast	455 m <sup>3</sup>
--------------	--------------------

### Propulsion System

Propulsion	No-propulsion
------------	---------------

### Auxiliary equipment

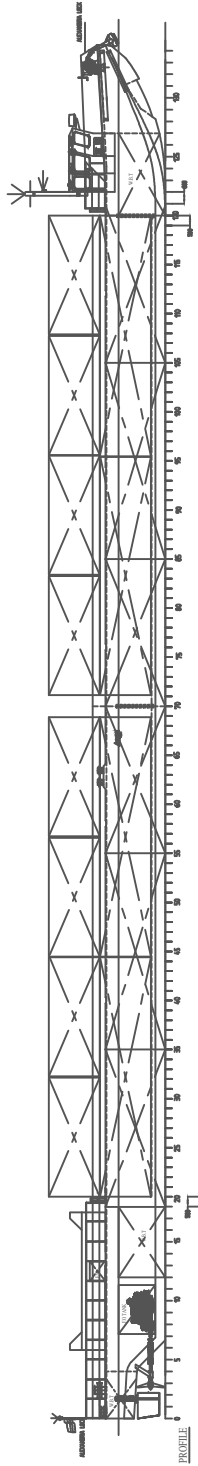
Bilge pump	Q=20 l/min, H=10 m
Ballast Pump	Q=80 m <sup>3</sup> /h, H=2.5 bar

### Deck lay-out

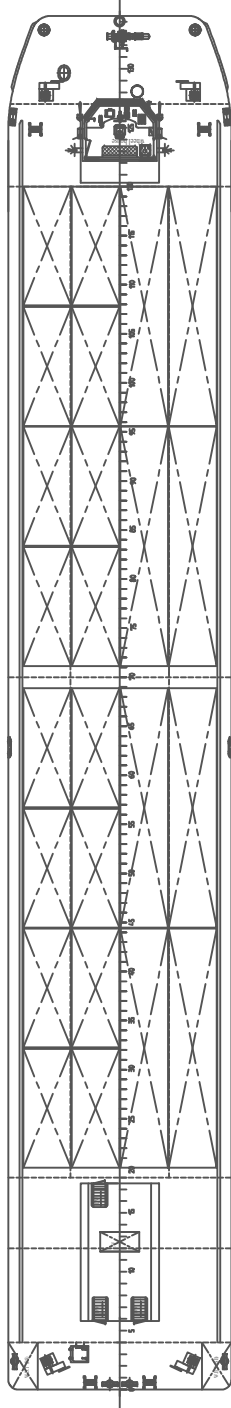
Anchors	1x1195 kg Pool-N type (High Holding Power)
Chain	60 m studlink, dia.30 mm Grade K2
Windlass	1 Electrically driven having one chain wheel
EL-mototr	Power supply: 3x380V/50Hz Two speed

### Operating Area

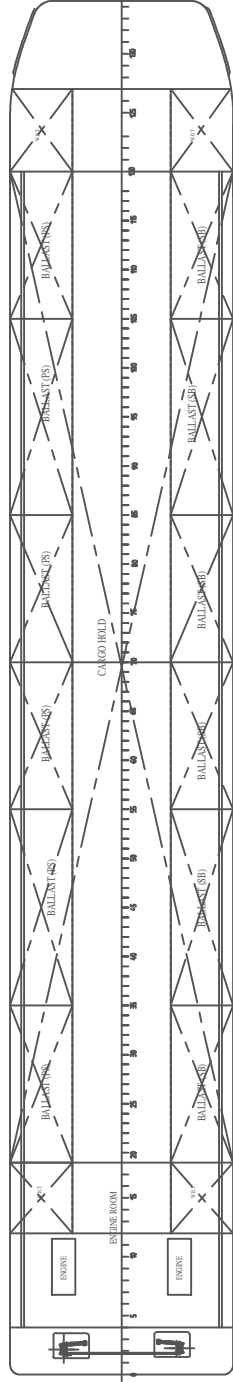
Aswan-Cairo
Cairo-Alexandria on Beheiry canal
Cairo-Damietta on Damietta branch



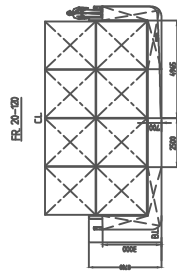
PROFILE



MAIN DECK



TANK TOP



**BARGE CHARACTERISTICS**

LENGTH OVER ALL 70.00 m  
 LENGTH MOULDED 69.90 m  
 BREADTH OVER ALL 11.40 m  
 DEPTH 3.00 m  
 MAX DRAFT 2.38 m



Jacoba Spijker dreef  
 196  
 2132 FZ Hoofddorp  
 The Netherlands  
 Tel. +31(0)23-5547310

**CLASS NOTATION**

+ 1.5 IN(0.6) Z CARGO VESSEL, DOUBLE HULL, IR, GRABLOADING  
 EQUIPPED FOR TRANSPORT OF CONTAINERS, INTACT STABILITY

70M - CARGO - BARGE - FOR - NILE

Title : GENERAL - ARRANGMENT

PROJ.No: AAM201603

Scale: Drawn: Size: REV: Date:

OMNIA MAGDY A 0 AAM201603-000-01

This drawing is protected by copyright and property of the designers. No part whatsoever may be copied, reproduced, modified or used in any manner without permission.