



## Catamaran 24 m

### General

Yard no.  
Delivery date  
Basic functions  
Classification NSCV/USL 1C

### Auxiliary equipment

Generators :2 x Perkins 72 KVA  
Sewage plant .....  
Bilge pump .....

### Dimensions

Length o.a. 24,00 m  
Beam o.a. 8.5 m  
Draught aft 1.1 m  
Material Aluminium

### Accommodation

Crew 5  
Passengers 195

### Tank capacities

Fuel oil : 6000 litres  
Fresh water :1000 litres  
Sullage : 4000 litres

### Nautical and communication equipment

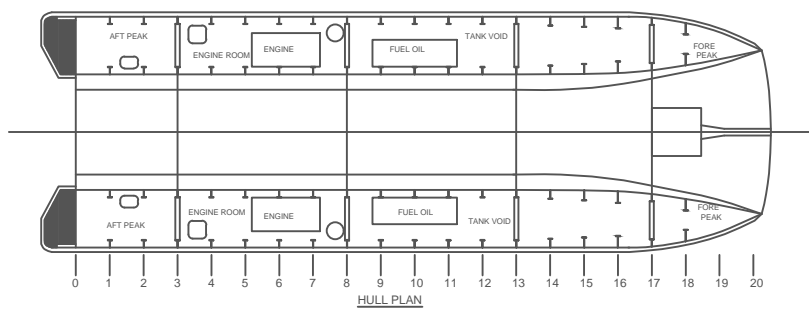
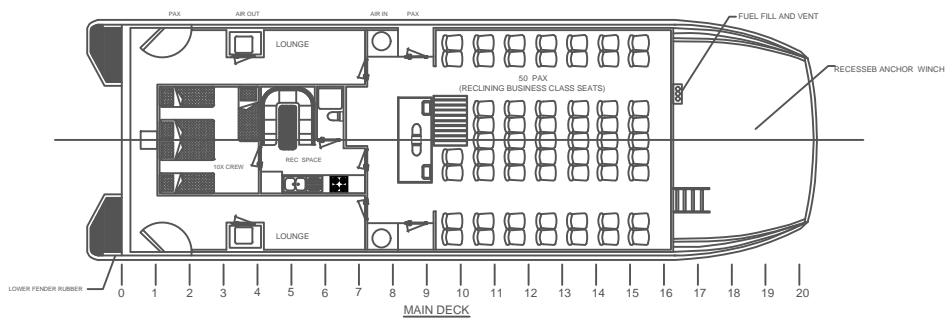
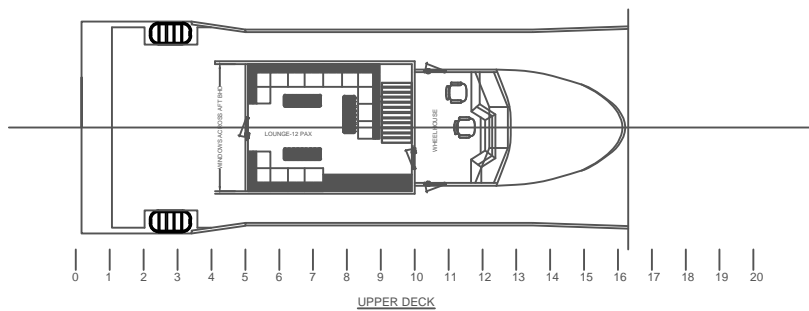
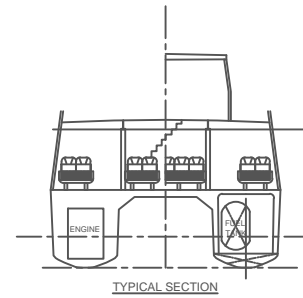
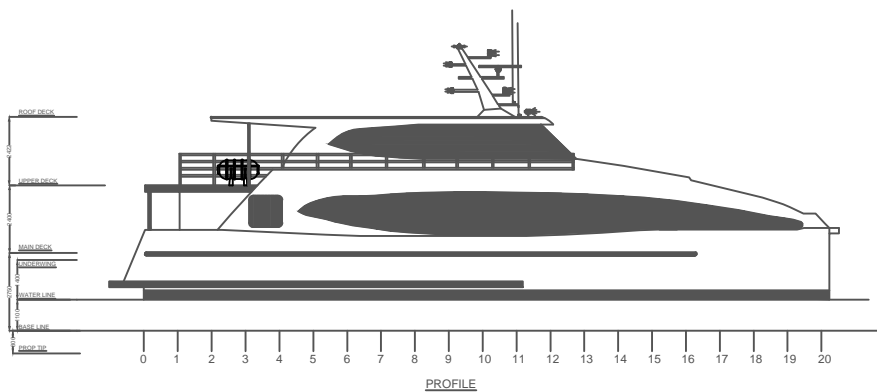
Radar : Furuno  
GPs : Furuno  
Echosounder :Furuno  
Navtex : Furuno  
VHF radio :2x Sailor  
SSB radio telephone :Furuno

### Performances (trials)

Speed : 26 knots

### Propulsion System

Main engines : 2 x Yanmar 6AYM-GTE  
Total power : 2 x 618 kw  
Propulsion :2 x Propellers




**MAIN DIMENSIONS:**

FULL LENGTH 24 m  
Breadth 8.5 m  
Draft 1.1 m  
Service Speed 26 Knots

CONSTRUCTIONS MATERIAL:  
HULL ALUMINUM

TANK CAPACITY  
Fuel capacity 6.000 L  
Fresh water 1000 L



Jacabu Spijker dreef 196  
2132 PZ Hoofddorp  
The Netherlands  
Tel. +31 (0)23-5547310

<b>24.0M-CATAMARAN</b>			
Title : <b>GENERAL-ARRANGEMENT</b>			PROJ.No: <b>AAM2016010</b>
Scale:	Drawn:	Size:	REV:
	OMNIA MAGDY	A 0	OMNIA MAGDY
		Date:	<b>17-10-2016</b>
			Dwg.No: <b>AAM2016-10-000</b>
This drawing is protected by copyright and property of the designers. no part whatsoever may be copied reproduced modified or used in any manner without permission.			