



Diving motor yacht 55

General

Yard no.	
Delivery date	
Basic functions	Diving motor yacht
Material	Steel
Classification	BV +1A1, YACHT BUREAU VERITAS

Dimensions

Length o.a.	55,00 m
Beam o.a.	9.70 m
Depth at sides	3.650 m
Draught aft	2.750 m

Tanks

Fuel oil	73.18 m3
Fresh water	40.32 m3
Water ballast	175 m3

Performances (trials)

Speed	:16.0 knots
-------	-------------

Propulsion System

Main engines	2xCATERPILLAR CAT 3512
Total power	2x1350 KW ,1600 RPM
Propeller	Two 4-bladed highly skewed fixed pitch propellers

Auxiliary equipment

Two aux. engines, engine and alternator (CATERPILLAR CAT 3408)

Galley

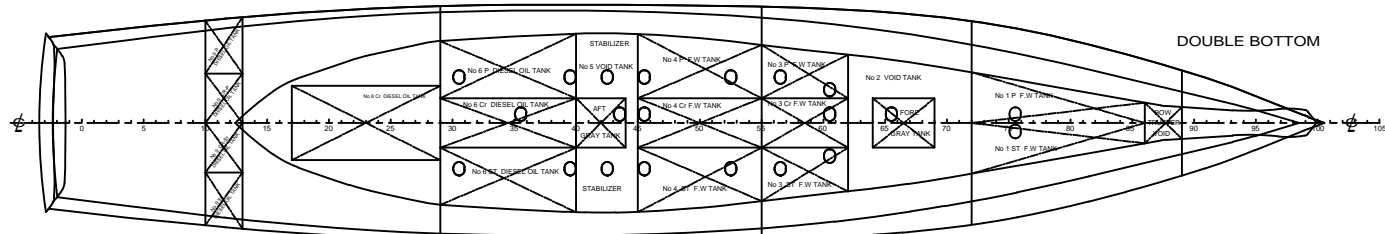
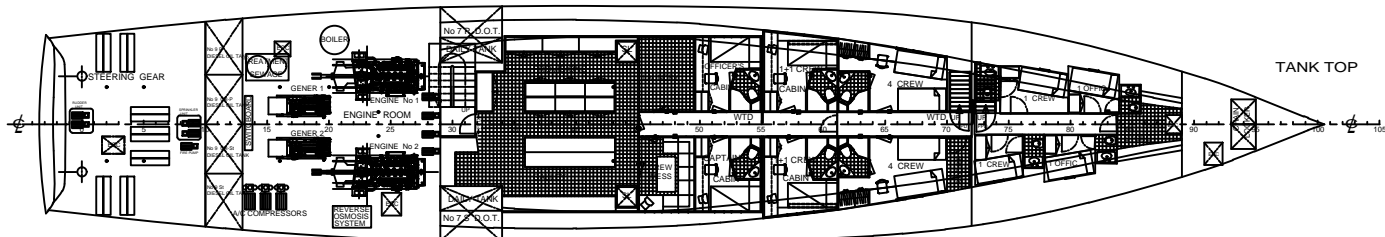
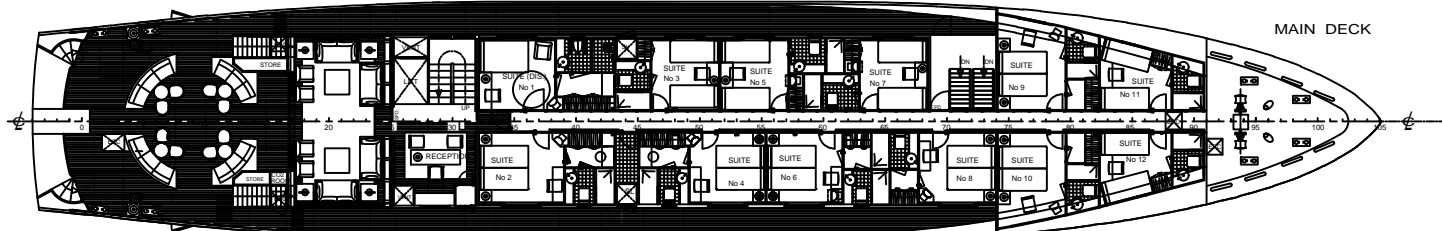
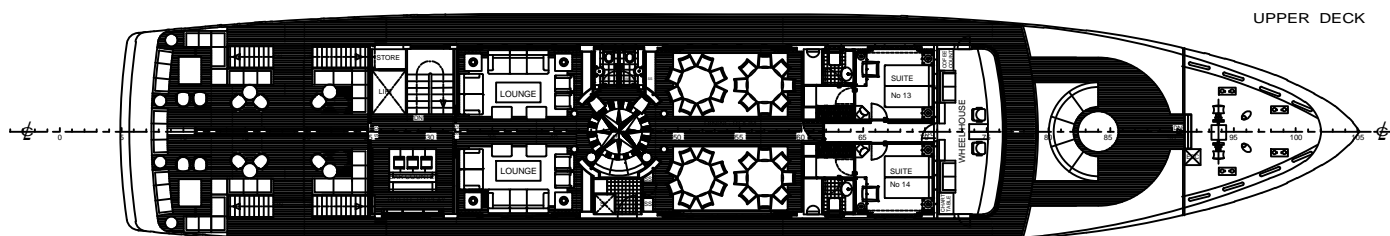
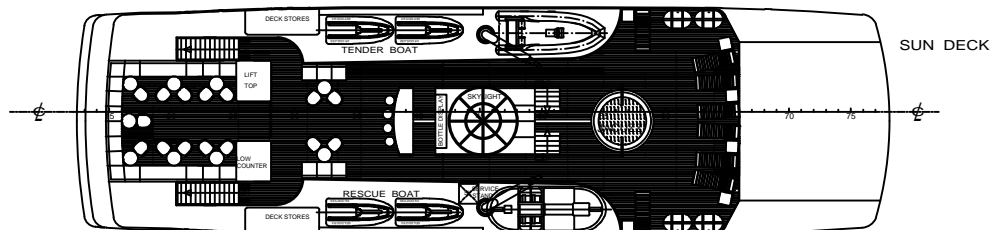
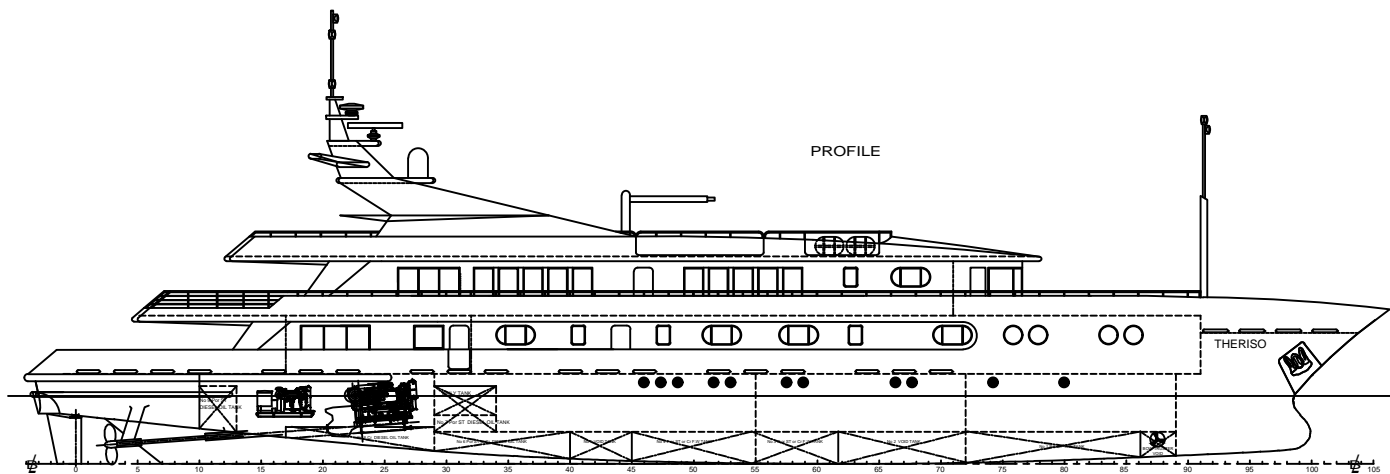
Cooker	electric
Oven/Microwave	Bosch
Refrigerator	Bosch
Deep Freezer	Bosch
Ice Maker	Yes
Washingmashine	Bosch
Water Maker	Yes

Accommodation

Salon	Home Cinema/42' Plasma/Leather
Cabins	14 X 2 guest cabins with WC/Shower
Plasma	1x Plasma, 2x LCD
DVD/CD/Tape/	DVD-Homecinema in salon,
Homecinema	Stereo in Cabins

Navigation & Electronic

VHF Radio (DSC)	Furuno
Compass	Furuno
Radar/GPS	Furuno
Autopilot	Furuno
Depth-Sounder	Furuno
Chart Plotter	Furuno
Waether forecast	Yes
Satellite Antenna	Yes



MAIN DIMENSIONS

Length overall	55,000 meters
Length between per	49,570 meters
Breadth maximum	9,700 meters
Depth moulded	3,650 meters
Design draft	2,750 meters
Frame spacing	0,500 meters



Jacobs Spijker dreef 196
2132 PZ Hoofddorp
The Netherlands
Tel. +31(0)23-5547310

YACHT-55M

Title : GENERAL-ARRANGEMENT PROJ.No: AAM201505

Scale: Drawn: Size: Date: 25-5-2015 Dog.No: AAM201505-000-01

This drawing is protected by copyright and property of the designers, no part whatsoever may be copied, reproduced, published or used in any manner without permission.